

Signposting directory

information on local
services, facilities
and resources



[click section title to go to the correct page >>](#)



1. Shortcuts to key Council services
2. Your nearest Jobcentre Plus
3. Independent welfare benefits advice and help with money or debt
4. Legal help including dealing with immigration issues
5. Dealing with the effects of crime or anti-social behaviour
6. Facilities for children and young adults
7. Advice and services for the over 55s
8. Help to get into employment
9. Education and training resources
10. Finding a doctor, dentist or other medical services
11. Coping with substance misuse
12. Finding the right mental health services
13. Finding the right care services
14. Disability advice
15. Transport and mobility services
16. Community resources and day centres
17. Cultural and religious facilities
18. Carers and parents groups
19. Sport and leisure facilities
20. Settling into a new home - utilities and furniture
21. Resources for gay men, lesbians and bisexual and transgender people
22. National advice and helplines

[click >>](#)

[Cover](#)

[next page](#)

[index](#)

[click here to tell us about broken links or to suggest additional entries >>](#)



GETTING IN TOUCH

Main contact

Civic Centre, High Road, Wood Green, London N22 8LE
Tel: 020 8489 0000 (switchboard)

Call Centre

Open Mondays & Fridays from 8:00am to 6:00pm and on
Tuesdays, Wednesdays, & Thursdays from 8.00am to 8.00pm

- Abandoned vehicle reporting line 0845 073 6904
- Anti-social behaviour reporting line 0845 671 1177
- Childcare Information Service 020 8489 1546
- Council tax enquiries 0845 073 3557
- Electoral services (voter registration) 020 8489 2951
- Free school meals 020 8489 1922
- Graffiti and fly posting reporting line 0845 073 1979
- Homelessness and housing advice 0845 076 2700
- Housing and council tax benefit 0845 071 2800
- Noise nuisance reporting 020 8489 3026
- Parking (parking fines & bus lane fine payment) 0845 073 1234
- Pest control 020 8489 5551
- Recreation (trees, parks etc.) 020 8489 5656
- School clothing grants 020 8489 1940
- Student finance 020 8489 2135
- Transportation 020 8489 5571
- Minicom (for the hearing impaired only) 020 8489 2088

Email customer services:

Customer.Services@Haringey.gov.uk

Emergency switchboard telephone number:

tel: 020 8348 3148
Haringey's Out of Hours services meet the Council's responsibilities when dealing with certain emergencies. The service is available outside of normal business hours when council offices are closed.

[click here >> for the Council's a to z of services](#)

Customer Service Centres

Hornsey Customer Services Centre

Broadway Annex, Hornsey Town Hall, Crouch End N8 9JJ
Opening times: Monday - Friday 8.45am - 5.00pm

North Tottenham Customer Services Centre

639 High Road, Tottenham N17 8BD
Opening times: Monday - Friday 8.45am - 5.00pm

South Tottenham Customer Services Centre

Apex House, 820 Seven Sisters Road, Tottenham N15 5PQ
Opening times: Monday - Friday 8.45am - 5.00pm

Wood Green Customer Services Centre

Ground Floor, 48 Station Road, Wood Green N22 7TY
Opening times: Monday - Friday 8.45am - 5.00pm.

HOW TO CONTACT

Use the call centre numbers or visit a local service centre for **Housing Benefit, Council Tax Benefit Enquiries and Council Tax Enquiries** and info on **Recycling**.

Parking Permits

To apply for a new permit complete the parking permit application form and the parking permit payment form and return them with all the supporting information requested.
[Download the forms here>>](#)
Return completed applications to: Parking Office
PO Box 38996, London N22 9AF

Bulk refuse collection

Contact Haringey Accord on 020 8885 7700 to arrange for a bulky waste collection. White goods such as fridges and freezers are collected free of charge; collections of other items are charged at £16.84 for a maximum of six items.

Pest Control

639 High Road, Tottenham, London N17 8BD
Open: Monday - Friday 8.45am - 4.45pm.
tel 020 8489 5551

[click >>](#)

[last page](#)

[next page](#)

[index](#)



LOCAL OFFICES

Highgate Job Centre Plus
1 Elthorne Road, Archway, London N19 4AL
Tel: 0845 377 0002

Tottenham Jobcentre Plus
640-656 High Road, Tottenham, London N17 0AA
tel: 020 8365 5200
Textphone: 0845 601 6919

Wood Green Jobcentre Plus
Granta House, 1 Western Road, Wood Green London N22 6UH
tel: 020 8899 3200
Textphone: 020 8365 5540

Jobcentre Plus is the government agency with responsibility for delivering the national employment service and the social security office in the United Kingdom administering a range of welfare benefits. They are often operated from a high street shop location.

Jobcentre Plus typically provides resources to enable the unemployed find work, including posting vacant job listings using a computer system called LMS (Labour Market System) which can be accessed by customers through Jobpoints (touch-screen computer terminals) as well as providing job-search help and information about training opportunities for those who have been registered as unemployed for some time. Part of the agency is engaged in administering claims for unemployment benefits such as Jobseeker's Allowance.

click >>

last page

next page

index

Click here >> for on-line information about Jobcentre Plus services.



ADVICE AGENCIES

There are three Citizens Advice Bureaux (CAB) in Haringey.

Hornsey Citizens Advice Bureau

7 Hatherley Gardens, Crouch End, London N8 9JJ
 tel: 0870 126 4030 fax: 020 8374 2646
 Open: Mon, Thur & Fri 9.30am to 11.00am Wed by appointment only. Phone advice Mon, Thur & Fri 2.30pm to 4.30pm, Tue 2.30pm to 3.30pm. Recorded information at any other time.
 Hornsey CAB works with all groups of people and offers generalist advice in all areas including housing, immigration, consumer, education, benefits and employment. The service can be contacted directly by telephone or at the office.

Tottenham Citizens Advice Bureau

Town Hall Approach, Tottenham, London N15 4RY
 tel: 0870 126 4030 fax: 020 8376 0909
 Open: Mon, Tue & Fri 9.30am to 11.00am Wed 4.30pm to 6.30pm
 Phone advice: Mon, Tue, Thur & Fri 2.30pm to 4.30pm, Wed 2.30pm to 3.30pm
 Recorded information at any other time.
 Tottenham CAB can provide advice in Bengali, Cantonese, Greek, Hindi, Sylheti and Turkish.

Turnpike Lane Citizens Advice Bureau

14A Willoughby Road, London, N8 0JJ
 tel: 0870 126 4030 fax: 020 8374 0527
 Open: Mon 4.30pm to 6.30pm, Wed, Thur & Fri 9.30am to 11.00am, Tue by appointment only.
 Recorded information at any other time. Turnpike

CAB has specialist advice on Welfare Benefits and immigration services.

LOW COST FINANCE

Change

Coming soon to this borough...
 A low cost alternative to doorstep loan sharks and financial literacy/skills development courses. [Click here >>](#) for details

BASIC BANK ACCOUNTS

Basic bank accounts are offered by many high street banks and can be opened by most people.

[Click here >>](#) for the Financial Services Authority's advice on choosing a bank

[or here >>](#) for the CAB version

[click >>](#)

[last page](#)

[next page](#)

[index](#)

see also

National Debtline, telephone helpline: 0808 808 4000 or email advice@nationaldebtline.co.uk web: www.nationaldebtline.co.uk



LEGAL HELP

Haringey (Tottenham) Law Centre

754-758 High Road, Tottenham, London N17 0AL

tel: 020 8808 5354

Advice line: 020 8801 6064

Legal advice and information on housing, debt, welfare benefits and immigration issues for people in receipt of benefits or on a low income.

(Area Served: London Borough of Haringey.)

Citizens Advice Bureaux

Can also help with legal matters, [click here >> for contact details](#)

[Click here >> for help yourself legal info on the web from Community Legal Service Direct.](#)

[click >>](#)

[last page](#)

[next page](#)

[index](#)

See Also

The Law Society of England and Wales
www.lawsociety.org.uk
 who provide advice on choosing a solicitor and promote access to justice for all.



METROPOLITAN POLICE

Community Safety Unit (CSU)

The CSU offers support and protection to anyone targeted due to their race, colour, religion, sexual orientation, disability, or to anyone who has experienced domestic violence.

Contact: The CSU is based at Hornsey Police Station, 98 Tottenham Lane, London N8.
Tel: 020 8345 1943. Open: 8am to 6pm Mon to Fri and 8am to 4pm at the weekend. If possible, ring first and arrange an appointment.

The CSU has a number of specially trained officers who deal with hate crime, which includes Domestic Violence. If a Domestic crime is reported it will be fully investigated by an officer from the unit. If at the end of the investigation a criminal prosecution is taken, an officer will remain in contact with the victim and keep them updated throughout the prosecution as to the progress of the investigation. The officers in the unit all wear plain clothes when dealing with victims of hate crime and drive unmarked police vehicles.

Haringey Police Stations

[Click here >>](#) for a list of Police Stations in Haringey.

COMMUNITY SERVICES

Noise control

To report a noise problem call 0845 0550921 during office Hours Mon - Fri: 8.45am - 5pm or 020 8348 3148 outside Office Hours.

Graffiti removal

The council can remove graffiti or flyposting. Report graffiti by ringing the call centre on tel: 0845 073 1979 open: Mon to Fri 8am to 8pm

Abandoned vehicles

To report an abandoned or untaxed vehicle tel: 0845 073 6904 or contact via email: abandoned.vehicles@haringey.gov

SUPPORT SERVICES

Victim Support

24-26 Commerce Road, Wood Green, London N22 8ED
tel: 020 8888 9878 fax: 020 8888 9848
email: admin@vsharingey.org.uk

Victim Support Haringey helps Haringey residents cope with the effects of crime. They provide confidential support and information to victims of crime and to witnesses attending local courts. Services are free, independent of the police and courts, and available to everyone, whether or not the crime has been reported and regardless of when it happened.

Hearthstone

Haringey Domestic Violence Advice & Support Centre
Commerce Road, Wood Green, London N22 8ED
Drop in Mon to Fri 10am - 4pm, or telephone to make an appointment, Mon to Fri 9am - 5pm.
tel: 020 8888 536210 Open: Mon to Fri 10am-4pm

Anti-Social Behaviour (ASB)

Anyone living, working, studying or visiting the Borough can report ASB on their dedicated line:
tel: 0845 671 1177 open: Mon - Fri 8.00am - 6.00pm

MEDIATION

Camden Mediation Service

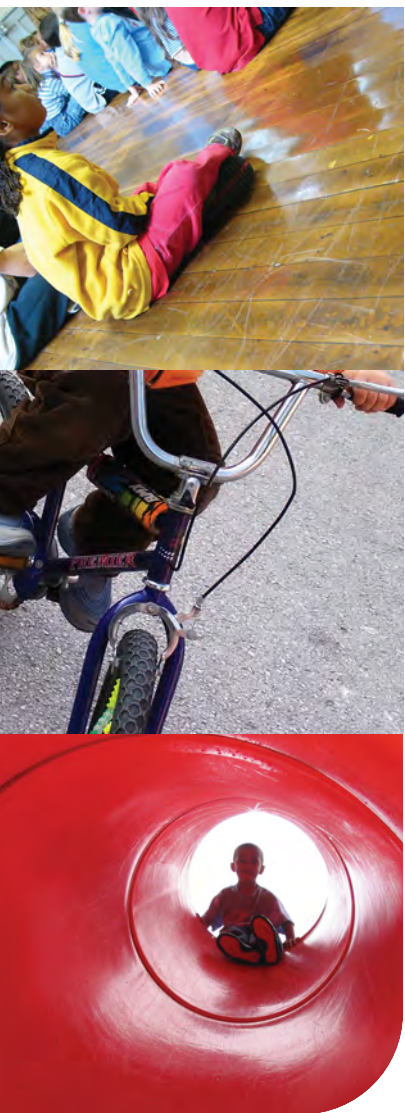
11-17 The Marr, Camden Street, Camden, London NW1 0HE
tel: 020 7383 0733 fax: 020 7383 7110
email info@camdenmediation.org.uk
Open: Mon, Wed and Fri 10am - 5pm, Tue and Thur 10am - 9.30pm. Service Offered: Mediation service for people who are involved in a neighbour dispute or other disputes within the community. Service free of charge to Haringey tenants.

[click >>](#)

[last page](#)

[next page](#)

[index](#)



CHILD CARE

Childcare link

Directory for all local childcare services [click here >>](#) for Haringey pages.

SERVICES FOR CHILDREN

Children's Centre Services (CCS)

There are ten 'hub' services for children of all ages – offering a base for childminder networks and a link to other day care provision, out of school clubs and extended services in and around schools.

Broadwater Farm - Noel Park - Park Lane - Pembury House - Plevna - Rowland Hill - Stonecroft - Stroud Green - Woodside - Woodlands Park

[Click here >>](#) to get full details of each centre

TEENAGERS

Tottenham Connexions Centre

560-568 High Road, Tottenham, London, N17 9TA
tel: 020 8808 0333 fax: 020 8808 0444
email: tottenhamcc@connexions-northlondon.co.uk

Benefits advice, Counselling advice, Employment, education and training advice and information, Sexual health information, Mental health services information, Signposting to housing advice, legal information and advice, Signposting to drugs and alcohol information and advice, Finance and student loans information, Advice on and referral to personal development opportunities,

[See Connexions Direct for advice outside office hours >>](#)

Youth projects

A wide range of youth centres, clubs and resources are available for young people in the Haringey area. [Click here >>](#) for a full list.



Sure Start is the Government's programme to deliver the best start in life for every child by bringing together: early education, childcare, health and family support.

Services: advice on education and accessing education, access to childcare, information for parents, employment advice to information on childcare, and children's centres. [Click here for the list of local programmes >>](#)

[click >>](#)

[last page](#)

[next page](#)

[index](#)



ADVICE SERVICES

Age Concern Haringey

Tottenham Town Hall, Town Hall Approach Road
Tottenham, London N15 4RY
tel: 020 8801 2444
Open: 9.30am-4.30pm for phone enquiries &
9.30am-12.30pm for drop-in sessions

Advice on: Welfare Benefits, Disability benefits,
Housing Rights, Health & Social Care, access to local
services.

PRACTICAL SERVICES

Social Services

Access to Council services for older people is
through the Older People's Care and Assessment
Team. Before they can help they will carry out an
assessment of care needs.

See Also

Counsel & Care Helpline - Free, confi-
dential information & advice for the
over 60's, their carers, friends and fam-
ily - Call: 0845 300 7585

SeniorLine, Help the Aged, 207-221
Pentonville Road, London, N1 9UZ tel:
020 7278 1114 email:
info@helptheaged.org.uk , Web:
www.helptheaged.org.uk
A free telephone advice and information
service for older people, their relatives,
carers and friends.

Contact: Older People's Care and Assessment Team
40 Cumberland Road, Wood Green, London N22 7SG
tel: 020 8489 1400 fax: 020 8489 5977 / 1993
email: over65@haringey.gov.uk.
Open: Monday to Friday 9.00am to 5.00pm.

Services include: Meals on Wheels and Domiciliary
care

Day Centres for Older People

There are three Council run day centres in the bor-
ough, access is through the area based care manage-
ment teams as above.

Drop-in centres

Willoughby Road Drop-In Centre
14a Willoughby Road, London N8 OHR
tel/fax: 020 8340 2277

The Drop-In Centre
The Irish Centre, Pretoria Road, London N17 8DX
tel/fax: 020 8801 6398

Abyssinia Court Drop-In Centre
Weston Park, London N8 tel: 020 8347 2220

Woodside House Drop-In Centre
294 High Road, London N22 8YX
tel/fax: 020 8489 2309

Drop-ins open: Monday to Friday, 10.00am - 4.00pm

Age Concern Day Services

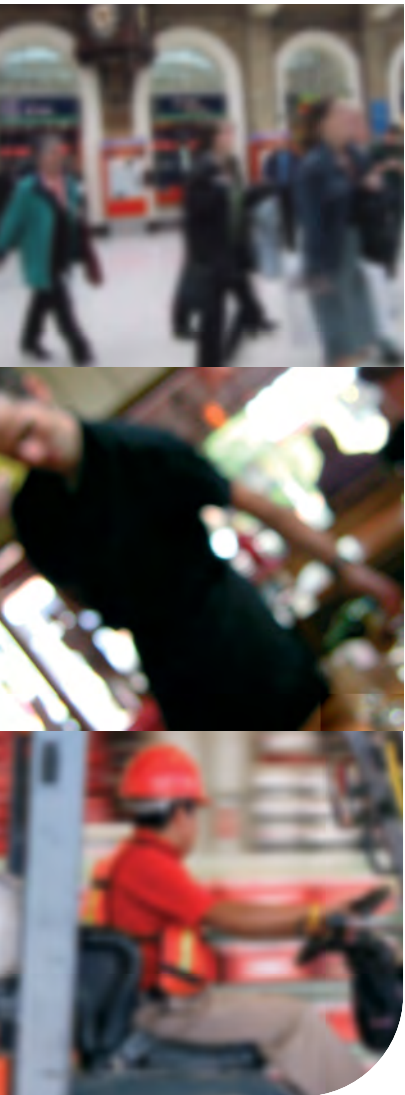
Room 20 Tottenham Town Hall, Town Hall Approach
Road, London N15 4RY
tel: 020 8885 1505
Provides a range of classes. Transport is available for
a fee: please ask when booking.

click >>

last
page

next
page

index



EMPLOYMENT ADVICE

New Deal

New Deal is a Government programme that aims to give unemployed people the help and support they need to get into work. Everyone on New Deal gets a personal adviser who is their point of contact throughout the programme. Call 0845 606 2626 7am to 11pm, seven days a week, for more info' or visit a Jobcentre Plus.

HALS Information Advice and Guidance Service (IAG)

Haringey Adult Learning Services provide careers advice in the borough. If you are 20 or older you can talk to them about learning opportunities, career ideas and getting employment.

This service is provided by HALS Employment and Learning Advisers(ELAs) who offer career information to people who live in the North London area and are 20 or older.

pathways2work

The pathways2work team can help Family Mosaic residents and their families to find employment, training or set up their own businesses.

[Click here >> for more info](#)

Contact

Wood Green Learning Centre

2nd Floor, High Road, Wood Green, London N22 6XD
tel: 020 8489 2500 fax: 020 8489 2551

White Hart Lane Learning Centre

White Hart Lane, London N22 5QR
tel: 020 8489 8781 fax: 020 8489 8782

I Can Do It - Selby Learning Zone

Selby Centre, Selby Road, London N17 8JL
tel: 020 8808 7770 fax: 020 8881 4818

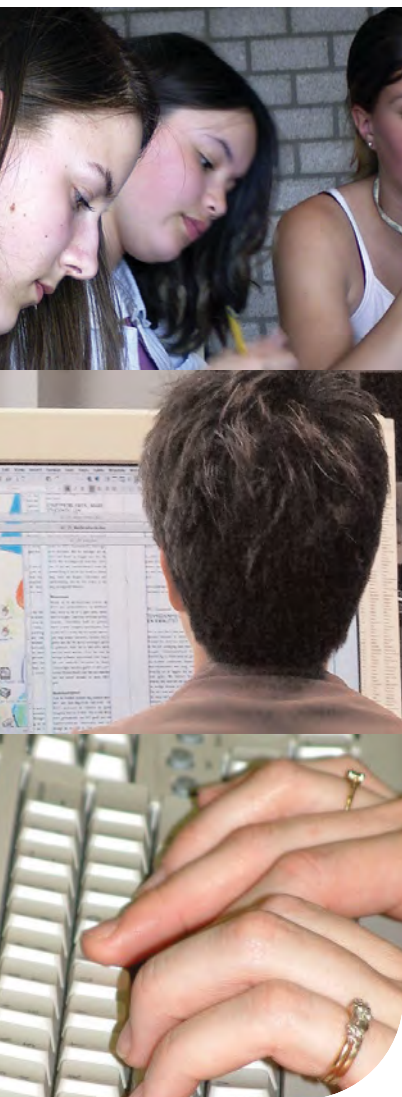
Service: I Can Do It aims to provide clients with a comprehensive, confidential and impartial information, advice and guidance service. Our professionally trained and experienced staff are on hand to assist all clients whether they are unemployed and seeking work, or they are not contented in their present situation

[click >>](#)

[last page](#)

[next page](#)

[index](#)



RESOURCES

Haringey Adult Learning Service

HALS courses are offered at a variety of venues around the borough and at different times of the day and week. You have the opportunity to discuss your learning needs before, during or after attending a HALS course and you will be given support in order to find out what else you can do and progress onto.

Day, evening and Saturday courses are available for 19 and over and include:

- Computing courses
- Counselling, yoga and aromatherapy
- Courses for new/small businesses
- Creative writing and journalism
- Desktop publishing, digital photography, video and web design
- Family Learning
- Fashion and sewing
- French and Spanish
- Finance (book-keeping, money management, Sage Payroll and Accounts)
- IELTS (International English Language Testing System)
- Reading, writing, maths & ESOL (English for Speakers of Other Languages)

Contact : email hals@haringey.gov.uk or at one of the following venues,

Wood Green Learning Centre

2nd Floor, High Road, Wood Green, London N22 6XD
tel: 020 8489 2500 fax: 020 8489 2551

White Hart Lane Learning Centre

White Hart Lane, London N22 5QR
tel: 020 8489 8781 fax: 020 8489 8782

see also

Learn Direct, online courses in computers, office skills, self development or to improve your maths or English. Network of more than 700 centres to help with local learning needs.

Click here for >> www.learndirect.co.uk

click >>

last page

next page

index



SEARCH FACILITIES

Doctors (GPs)

Use this NHS search facility to find a doctor in Haringey, [click here >>](#)

Pharmacies

Find a pharmacy (including late-night and emergency services) by visiting this search facility at NHS England, [click here >>](#)

Dentists

[Click here >>](#) to search for a dentist in Haringey.

HEALTH AUTHORITY

Haringey Teaching Primary Care Trust

St Ann's Hospital, St Ann's Road, Tottenham, London, N15 3TH Tel: 020 8442 6000

The Primary Care Trust is responsible for the provision of health services in Haringey. These include GPs, dentists, pharmacists, opticians, clinics, health centres, sexual health, smoking cessation, teenage pregnancy, child health and more.

Patient Advice and Liaison Service - PALS

Haringey TPCT, St Ann's Hospital, St Ann's Road, Tottenham, London N15 3TH
tel/answerphone: 020 8442 6859 (24 hour)
email: pals@haringey.nhs.uk

Contact PALS for advice and information about local health services.

HOSPITALS

Whittington Hospital NHS Trust

The Whittington Hospital NHS Trust
Magdala Avenue, London N19 5NF
tel: 020 7272 3070 fax: 020 7288 5550
web: www.whittington.nhs.uk

Patient Advice and Liaison Service
tel: 020 7288 5551 (24 hour confidential answerphone) Monday to Friday 9am - 5pm
email: pals@whittington.nhs.uk
fax number: 020 7288 5822

North Middlesex University Hospital NHS Trust

Sterling Way, London N18 1QX
tel: 020 8887 2000 fax: 020 8887 4219
web: www.northmid.nhs.uk

See Also

NHS Direct: Gateway to health information on the web or by phone
0845 4647
www.nhsdirect.nhs.uk

[click >>](#)

[last page](#)

[next page](#)

[index](#)



SELECTED SERVICES

Drugs Advisory Service Haringey (DASH)

DASH offers a free and confidential service, providing a range of accessible services to drug users, their families, partners and friends in the London Borough of Haringey.

The team at DASH is made up of people with different experience and skills. It includes trained medical, nursing and counselling staff. In addition, we are supported in this work by a skilled administrative team. We aim to provide a friendly, welcoming and professional service to all sections of the community.

DASH drop-in service - Stroud Green offers advice, information and counselling needle exchange complementary therapies welfare benefits advice legal advice health care services for crack cocaine users just turn up - you do not need to be referred.

80 Stroud Green Road, Finsbury Park, London N4 3EN
 tel: 020 7272 2757 fax: 020 7263 6005
 open: Mon, Tue and Thur: 2pm - 5pm, Wed: 4pm - 7.30pm, Fri: closed

Haringey Drugs Education Team

The Family Resource Centre, 4 Pulford Road, London N15 6SP tel:020 8489 2228/40
 Provides drugs education for schools/young people and training for teachers and parents, governors, support staff and other professionals.

Haringey Advisory Group on Alcohol

590 Seven Sisters Road, Tottenham, N15 6HR
 tel: 020 8800 6999 open: weekdays 9-5.30 (late nights Tues and Thurs) and have an out of hours answerphone service.

Services: community detox, structured day programmes, residential rehabilitation, housing and support, Turkish speaking workers available, employment training / KINESIS, counselling and complementary therapies

Step Ahead

Adolescents in Haringey & Enfield Alcohol & Drug Service Barnet, Enfield, Haringey MH NHS Trust
 40 Bromley Road, Tottenham, London N17 0AW
 tel: 020 8493 8525 fax: 020 8493 8318

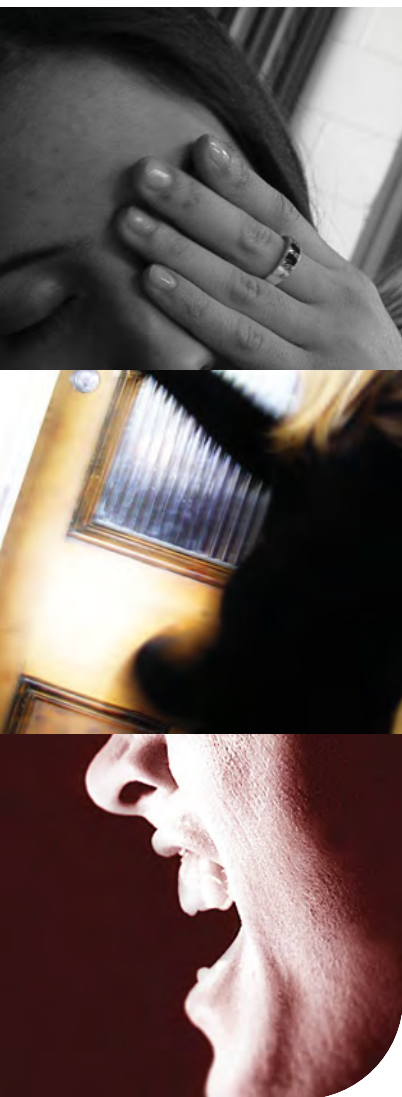
Services: Advice and Information; Motivational Interviewing; Needle Exchange; Street Outreach Services; Assessment / Care management; Structured community-based detoxification for children/young people and their families/relatives.



Click the picture >> to open Haringey's excellent service directory for D&A services

click >>

- last page
- next page
- index



STATUTORY SERVICES

Community Mental Health Teams (CMHTs)

There are four in Haringey. contact your local team for access to services:

Hornsey and Highgate Community Mental Health Team for residents living in Hornsey or Highgate or registered with a Hornsey or Highgate sector family doctor

Wood Green Community Mental Health Team for residents living in Wood Green or registered with a Wood Green sector family doctor

The Hornsey/Highgate and the Wood Green Community Mental Health Teams are located at:

Canning Crescent Centre, 276-292 High Road, Wood Green N22 8JT
tel: 020 8829 1000 fax: 020 8829 1005

North Tottenham Community Mental Health Team for residents living in North Tottenham or registered with a North Tottenham sector family doctor

South Tottenham Community Mental Health Team for residents living in South Tottenham or registered with a South Tottenham sector family doctor

North Tottenham and the South Tottenham Community Mental Health Teams are located at:

24 Tynemouth Road, Tottenham, N15 4RH
tel: 020 8275 4089 fax: 020 8275 4123

Barnet, Enfield and Haringey Mental Health Trust
Provides a range specialist mental health services including inpatient, outpatient, community and day hospital services across Barnet, Enfield, Haringey and parts of South Hertfordshire.

Barnet, Enfield and Haringey Mental Health Trust
Avon Villa, Chase Farm Hospital Site, The Ridgeway
Enfield, London EN2 8JL
tel: 020 8366 6600
[click here >>](#) for a full list of contact details.

Child and Adolescent Mental Health Service (CAMHS)
H Block, St Ann's Hospital, St Ann's Road, London N15 3TH tel: 020 8442 6467 fax: 020 8442 6116

CAMHS is a multi disciplinary team providing psychiatry, psychology, child psychotherapy, speech and language therapy and family therapy. Referrals can be made by health professionals, social services, education and voluntary sector. Age range: 0 to 16 years (up to 18 years if in education.)

VOLUNTARY SECTOR SERVICES

Haringey Alzheimer's Society
Room 18, William Rainbird House, Beaufoy Road
London N17 8AY tel: 020 8808 9931
email: alzharingey@btconnect.com

Mind in Haringey
Station House, 73c Stapleton Hall Road London N4 3QF tel. 020 8340 2474

[click >>](#)

[last page](#)

[next page](#)

[index](#)



STATUTORY CARE SERVICES

Adult social care in Haringey provides help and support to those aged over 18 years who are vulnerable.

Vulnerable people include:

- older people people with a physical disability, or sight or hearing impairment
- people with mental health needs
- people with learning disabilities
- people who misuse substances
- people with long-term illness
- people who need sheltered or supported housing
- carers.

Contact:

Haringey Learning Disabilities Partnership
 Unit 5, St George's Estate, White Hart Lane, London N22 5QL tel: 020 8489 1384 fax: 020 8489 1327 email: HLDP@haringey.gov.uk.

Carers Support Team
 40 Cumberland Road, Wood Green, London N22 7SG tel: 020 8489 3967 fax: 020 8489 3688 email: carerssupportteam@haringey.gov.uk.

Pensioners and older people aged 65 and over
 40 Cumberland Road, Wood Green N22 7SG tel: 020 8489 1400 fax: 020 8489 5977 / 1993 email: over65@haringey.gov.uk.

Physical disabilities and sensory impairment
 40 Cumberland Road, Wood Green, London N22 7SG tel: 020 8489 3093 fax: 020 8489 3032 Email PhysdisDuty@haringey.gov.u

Contact one of the local **Community Mental Health Teams** for care services for people with mental health problems [click here >>](#)

Information on accessing care services for people with substance misuse problems is given [here >>](#)

OTHER SERVICES

Safe and sound community alarms
 The Council provides alarms to vulnerable people and offer help to those who may need assistance at very short notice. Although the service is used predominantly by older people, it is also available to other vulnerable adults.

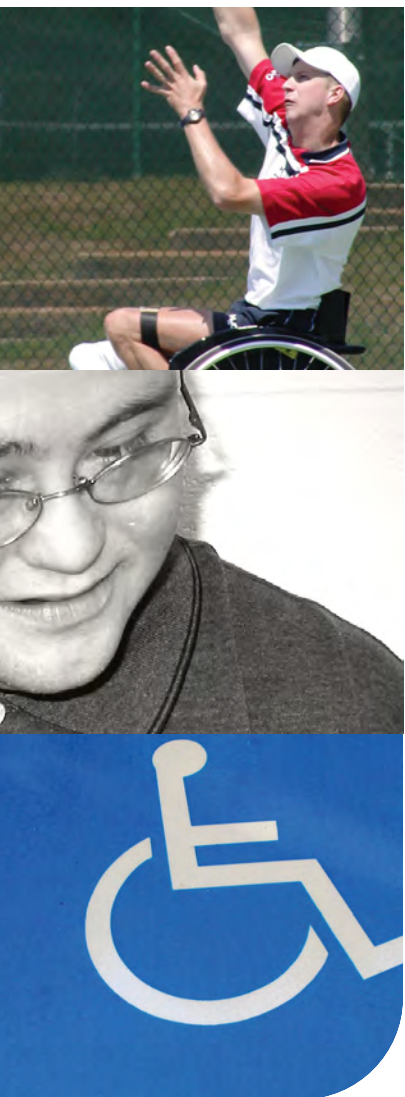
Safe and Sound Community Alarm Service
 Woodside House, 294 High Road, Wood Green London N22 8YX tel: 020 8489 2365 fax: 020 8489 2393

[click >>](#)

[last page](#)

[next page](#)

[index](#)



ADVICE/SUPPORT AGENCIES

Haringey Consortium of Disabled People & Carers
 551b High Road, Tottenham, London N17 6SB
 tel: 020 8801 8757 fax: 020 8801 8551
 minicom: 020 8880 3570
 email: offices@hcdc.uklinux.net

Information service offers help, support and expertise over a wide range of problems and issues. Also has an advocacy service for people with learning difficulties. Seeks to represent the views of people with disabilities, long term health problems, carers to decision-making organisations through consultation. Pass on information about relevant local and national disability issues to individuals and group members and offers a respite service to carers. Office hours: Mon - Thur 10.00am - 4.30pm.

Haringey Phoenix Group
 Winkfield Resource Centre, 33 Winkfield Road, Wood Green, London N22 5RP
 tel: 020 8889 7070

Working with blind and partially sighted people in Haringey and the surrounding Areas. Services include: Talking newspapers, day and weekend trips, a home visiting service for those that are isolated, various arts & crafts activities, keepfit and IT classes, free 'Roberts' Radio/Cassette Players for those that are registered blind.

OTHER

Disabled Facilities Grants
 A Disabled Facilities Grant is a local council grant to help towards the cost of adapting your home to enable you to continue to live there. The grant can be used to fund works to give you better freedom of movement into and around your home and/or to provide essential facilities within it.

Contact: Disabled Facilities Grants, Adult, Culture and Community Services, Haringey Integrated Community Equipment Services, 1st Floor Unit 5, St George's Estate, White Hart Lane Wood Green N22 5QL
 tel: 028 489 5533/5164

The Disability Law Service
 39-45 Cavell Street London E1 2BP
 tel: 020 7791 9800 minicom: 020 7791 9801
 fax: 020 7791 9802 email: advice@dls.org.uk

Services: National Adviceline, Mon to Fri 10.00am - 1pm & 2.00pm - 5pm
 Legal guidance by telephone or minicom from a specialist adviser in one of our six areas of law: Consumer Contract, Community Care, Disability Discrimination, Education, Employment Welfare Benefits

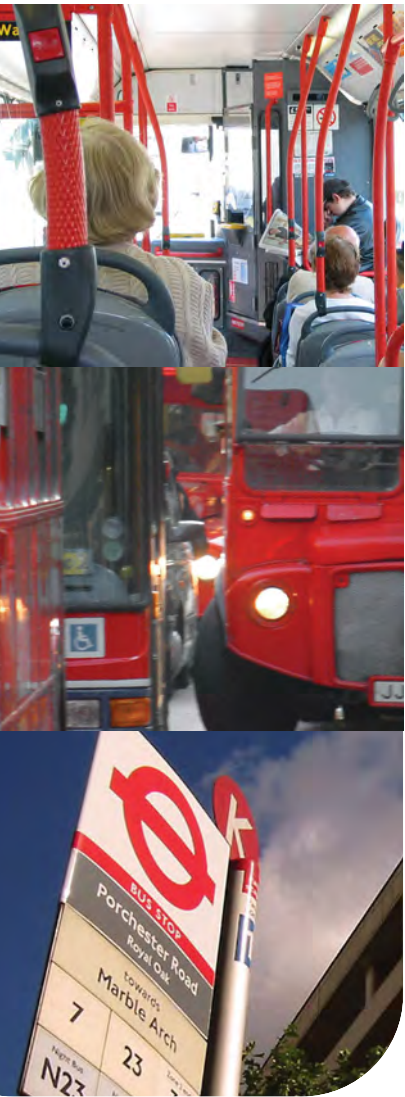
Casework available for those in the greater London area.

click >>

last page

next page

index



SELECTED SERVICES

Dial-a-ride

Operated by North London Dial-a-ride, Units C-D, Regents Avenue Industrial Estate, N13 5UR
tel: 020 8829 1200

Service provided: Transport service for borough residents who have difficulty using mainstream transport services. The service is available between 8.00 a.m. and 11.00 p.m. 365 days a year. Trips are usually limited to within borough boundaries. Book by phone. Small fees apply

Blue Badge Scheme

The Blue Badge scheme operates throughout the United Kingdom, providing a range of parking benefits for people with severe walking difficulties who travel either as drivers or as passengers. The concessions only apply to on-street parking and include free use of parking meters and pay-and-display bays.

How to apply for a Blue Parking Badge:

Application forms are available from the Council's Customer Service Centres or Contact Concessionary

Travel on tel: 020 8489 1878/1865 for an application pack.

Get more information and download and print the application form by [clicking here >>](#)

Taxicard

The London Taxicard Scheme allows people with disabilities who cannot use buses or trains to travel in licensed black cabs at reduced fares tel: 020 7484 2929

Bus and Tube Passes

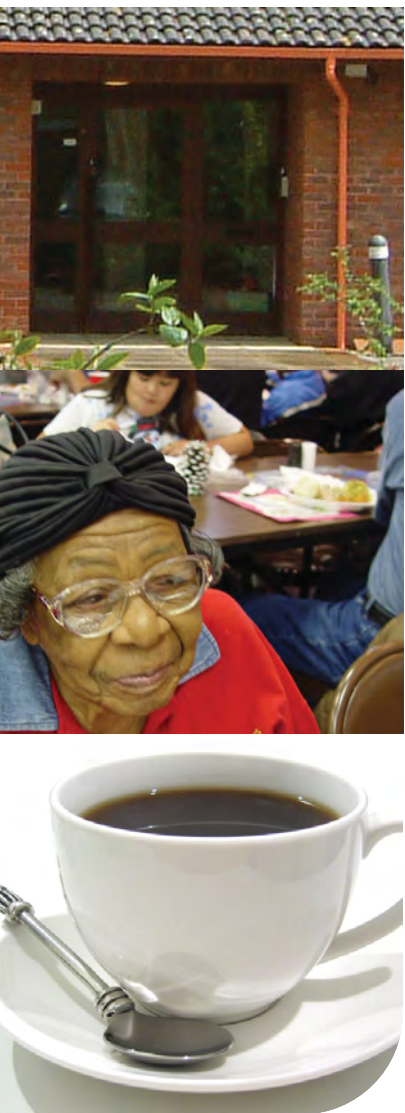
People aged 60+ can get a 'Freedom Pass' from most local post offices. Scheme is managed by ALG tel: 020 7484 2929.

[click >>](#)

[last page](#)

[next page](#)

[index](#)



COMMUNITY CENTRES

Broadwater Farm Community Centre
Adams Road, Tottenham, London N17 6HE
tel: 020 8801 4115

Chestnuts Community Arts Centre
280 St. Ann's Road, Tottenham, London N15 5BN
tel: 020 8802 4649

Hornsey Vale Community Association
Hornsey Vale Community Centre, 60 Mayfield Road
Hornsey, London N8 tel: 020 8348 4612

Jackson's Lane Community Centre
269a Archway Road, Highgate, London N6 5AA
tel: 020 8340 5226

Selby Centre
Selby Road, Tottenham, London N17 8JL
tel: 020 8885 5499

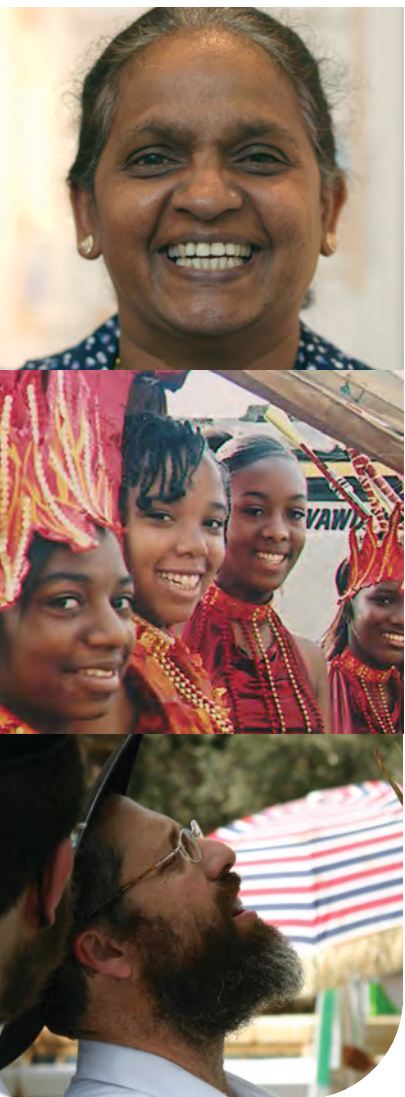
The Tagore Centre
Alexandra Park Library, Alexandra Park Road
Wood Green, London N22 7UJ
tel: 020 8444 6751

click >>

last page

next page

index



COMMUNITY RESOURCES

African Caribbean Leadership Council
 9 Clarendon Road, Hornsey, London N8 0DJ
 tel: 020 8881 5881 fax: 020 8888 5037

African Women's Welfare Group
 Hesta Annexe, 301 White Hart Lane, London
 tel: 020 8885 5822

Afro International Theatre Production
 Tottenham Co Workshop, 2 Somerset Road
 Tottenham, London N17 9EJ
 tel: 020 8808 9619

Asian Action Group
 30 Willoughby Road, Turnpike Lane, London N8 0JG
 tel: 020 8341 3802

Asian Centre
 8 Caxton Road, Wood Green, London N22 6TB
 tel: 020 8889 6938

Cypriot Community Centre
 Earlham Grove, Wood Green, London N22 5HJ
 tel: 020 8881 2329

Haringey Chinese Community Centre
 211 Langham Road, Tottenham, London N15 3LH
 tel: 020 8881 8649

Haringey Irish Cultural and Community Centre
 Pretoria Road, Tottenham, London N17 8DX
 tel: 020 8885 3490

Haringey Irish Community Care Centre
 72 Stroud Green Road, Finsbury Park, London N4
 3ER tel: 020 7272 9230

Turkish Cypriot Women's Project
 6a Hampden Road, Hornsey, London N8 0HX
 tel: 020 8340 3300

Haringey Refugee Consortium
 Selby Centre, Selby Road, London N17 8JL
 tel: 020 8885 5511 fax: 020 8808 0994

Service: Advice, information and guidance on employment for refugee communities. Advice and career/vocational guidance, ESOL classes, IT training for refugees, asylum seekers and people from minority ethnic communities.

Open: Mon to Fri 9.30am - 5.30pm

Eritrean Community in Haringey
 Selby Centre, Selby Road, London N17 8JL
 tel: 020 8365 0819 fax: 020 8808 9219
 Service: Advice and information for the Eritrean community in Haringey and neighbouring areas, including refugees and asylum seekers. Subjects covered include housing, benefits, health, education, employment and training, immigration and nationality. ESOL, counselling, advocacy, translation. After school youth club. Homework club, mother tongue classes and IT. Social and cultural activities.

Bangladesh Women's Association in Haringey
 Mitalee Centre, Stanley Road, London N15 3HB
 tel: 020 8365 7498 fax: 020 8365 7943

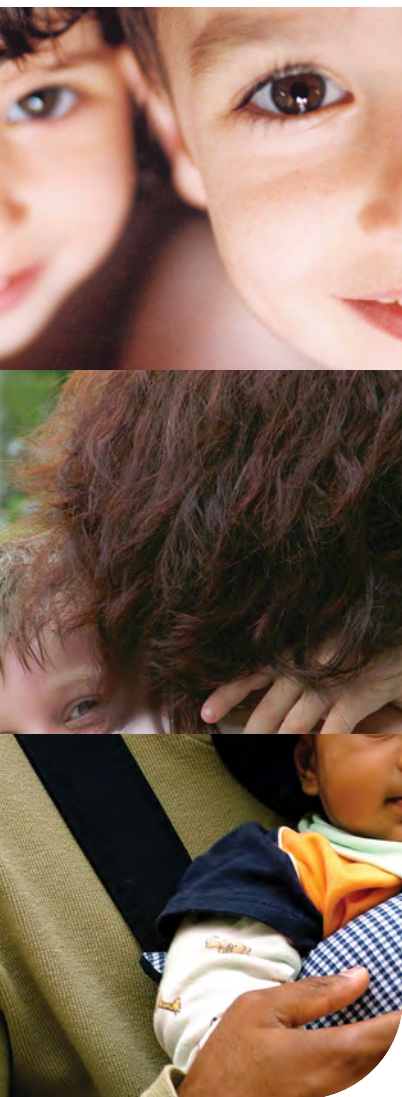
Centre for Bangladeshi women and women from other minority ethnic communities. Advice on benefits, housing, training, education, childcare, racial harassment, immigration, domestic violence.
 Open: Mon - Fri 9am - 5pm, Sat 1pm - 3pm

click >>

last page

next page

index



SELECTED SERVICES

Open Door Young People's Consultation Service
 12 Middle Lane, Crouch End, London N8 8PL
 tel: 020 8348 5947 fax 020 8341 1684
 email: enquiries@opendooronline.org

The Open Door service works with young people aged 13 to 24 years and parents of teenagers and young adults. It offers a therapy service available to 13 and 14 year olds where parent/s are invited to attend some of the sessions. The Parent Consultation Service offers appointments for parents of teenagers that aims to provide support and guidance on parenting problems.

Haringey Carers Centre
 Winkfield Resource Centre, 33 Winkfield Road
 Wood Green, London N22 5RP

The Council's Carers Centre can provide support, information and advice. They run an advice service for carers on the second Wednesday of every month (pre - booking is required), focusing particularly on Disabled Living Allowance, Attendance Allowance and Carers Allowance.

To pre-book an appointment:
 tel: 020 8489 8981 between 10am and 4pm.
 Other phone enquiries tel: 020 8489 8980.
 Open: Monday to Friday, 10am to 5pm

Family Support Service
 40 Cumberland Road, Wood Green, London N22 7SG
 tel: 020 8489 3671 Fax: 020 8489 3688

Council run family support service.

Red Gables
 Red Gables Family Centre, 113 Crouch Hill, London
 N8 9QN tel: 020 8348 7500.

This is a family centre that focuses on prevention, intervention and rehabilitation. Emphasis is on working in partnership with families where there are children up to 16 years of age, including the extended family and siblings.

Young Carers Project
 Red Gables Family Centre, 113 Crouch Hill, London
 N8 9QN tel: 020 8489 8001.

This is a service for children and young people aged 5 to 18 years, whose lives are restricted because of caring for someone with a long-term illness or disability.

Click here >> for www.parentscentre.gov.uk for general advice about parenting

See Also

Lone Parent Helpline 0800 018 5026
www.oneparentfamilies.org.uk
 Free confidential helpline service for single parents run by independent charity. Advice available on benefits, tax, child support, and employment

click >>

last page

next page

index



LEISURE CENTRES

White Hart Lane Community Sports Centre
 White Hart Lane, Wood Green, London N22 5QW
 tel: 020 8881 2323 fax: 020 8881 8983

Spanning over 40 acres and home to the Enfield and Haringey Athletics Club. Features a floodlit athletics track, equipped for all field events, four hard surface tennis courts; football, hockey and rugby pitches, including artificial grass pitch. There is also a 1,000 seater spectator's stand, an equipped gym, a full programme of fitness classes.

Park Road Swimming Pools
 Park Road, Hornsey, London N8 8JN
 tel: 020 8341 3567 fax: 020 8340 3588

Three indoor pools; a 50 metre outdoor pool (The Lido), children's pool and fountain edged by grass slopes; The 'Fit Stop' air-conditioned exercise room, therapy room and a sauna and sunbed suite. The centre runs a full programme of swimming, diving, water aerobics, Pilates, massage, fitness, yoga and body toning classes.

Tottenham Green Leisure Centre
 1 Philip Lane, Tottenham, London N15 4JA
 tel: 020 8489 5322 (for general information and bookings for sports facilities) fax: 020 8489 5344

Multi-facility indoor leisure centre with three pools; squash courts; facilities for badminton, five-a-side football, volleyball, netball, martial arts, trampoline,

table tennis and short mat bowls and much more. There is a health and fitness suite with fitness room, saunas, and sunbeds. The centre has a bar, café and seminar and activities room available for function hire. The centre also offers a comprehensive range of courses and classes.

Finsbury Park Track and Gym
 Endymion Road, London N4 0XX tel: 020 8802 9139

Located at the heart of Finsbury Park. Offers an athletics track, equipped for field events. Also has a gym, open seven days per week.

PARKS

[Click here >> for a list of parks in the borough](#)

OTHER FACILITIES

[Click here >> for Libraries in Haringey](#)
 There are nine libraries in Haringey. All open six days each week from Mon to Fri 9.00am - 7.00pm and on Sat 9.00am - 5.00pm. In addition Wood Green Central Library, Alexandra Park Library and Marcus Garvey Library are open on Sun 12.00noon - 4.00pm.

[Rent an allotment from the Council. Click here >> for more info'\(there is a waiting list for many sites\)](#)

SPORTS CLUBS

[Click here >> for a directory of local sports clubs](#)

click >>

last page

next page

index



LOW COST FURNITURE

ReStore Community Projects
18 Ashley Road, London N17 9LJ
tel: 020 8493 0900 fax: 020 8493 0109
e-mail: info@restorecommunityprojects.org

Morph Hackney (serves Haringey area)
19-23 Kingsland Road, London
tel:020 7168 2531 email:info@morph.org.uk
Second hand furniture at low prices.

POWER COMPANIES

Help on choosing a utility company - gas and electricity, visit www.energywatch.org.uk

GAS EMERGENCIES

Transco 0800 111 999

WATER

Thames Water Utilities Ltd
PO Box 436
Swindon SN38 1TU
tel: metered account enquiries 0845 9200 887
unmetered account enquiries 0845 9200 888
non-bill related enquiries 0845 9200 800
minicom 0845 7200 899
freephone leakline 0800 714 614

COMMUNITY CARE GRANTS

Community Care Grants help people who are getting Income Support or income based Jobseeker's Allowance or Pension Credit who are likely to get one of these benefits when moving out of institutional care or a care home. They help people live independently in the community and ease exceptional pressure on families. They cover a wide range of personal circumstances and variety of needs and expenses. They do not have to be paid back.

Contact your local Job Centre, Job Centre Plus or Social Security Office for an application form

click >>

last page

next page

index



SELECTED SERVICES

London Friend

Voluntary organisation that has been serving the lesbian, gay and bisexual community for over 30 years. They exist to promote, support and campaign for the social and emotional well-being, physical and sexual health of lesbian, gay and bisexual people and those who are unsure of their sexuality. All services are delivered by trained lesbian, gay and bisexual volunteers. Services provided include:

Telephone Helpline - 020 7837 3337
(19:30 - 22:00 daily)

One to One Counselling, Support Groups, Social Groups, A library on LGBT issues
Free information on HIV/AIDS and other Sexually Transmitted Infections, Free condoms and lube
www.londonfriend.org.uk/index.php

London Lesbian and Gay Switchboard

Information, support and referral service for lesbians, gay men and bisexual people from all backgrounds throughout the United Kingdom. Switchboard aims to: maintain comprehensive information on support, social and specialist services of relevance to lesbians, gay men and bisexuals. Raise awareness of sexual health issues including safer sex and to endorse positive personal choice. Offer support and initial advice to all callers on any problems they are facing. Suggest sources of more specialist advice, counselling or other help if callers want it. Lesbian and Gay Switchboard 020 7837 7324 www.llgs.org.uk

LAGER

Unit 1G, Leroy House, 436 Essex Road, London N1 3QP General Enquiries: 020 7704 2205
Independent advice agency affiliated to the Federation of Independent Advice Centres (FIAC). Free confidential legal advice, information and support to lesbians and gay men who are facing discrimination in the workplace or whilst looking for work.

Audre Lorde Clinic

Ambrose King Centre, Royal London Hospital, Whitechapel, London E1 1BB Fri 10am-5pm tel: 020 7377 7312 Services for lesbians.

Beaumont Society

The largest and longest established transgendered support group in the UK and has developed a support network, which has been at the forefront of the transgender, transvestite, transsexual and cross-dressing community since 1966! website: www.beaumontsociety.org.uk

Stonewall Housing

Housing advice for lesbians and gay men. website: www.stonewallhousing.org

GMFA

Volunteer-led gay men's health organisation. website: www.metromate.org.uk Call 020 7649 9311 (lines are open between 8.30am and 6pm Mon to Fri and 9am to 1pm on Sat)

click >>

last page

next page

index



LISTENING EAR

Samaritans

call 08457 90 90 90 anytime

ChildLine

free helpline for children and young people in the UK. Children and young people can call us on 0800 1111 to talk about any problem.

Families Anonymous

For Relatives and Friends Concerned About the Use of Drugs or Related Behavioural Problems
Helpline: 0845 1200 660

click >>

last page

1st page

index